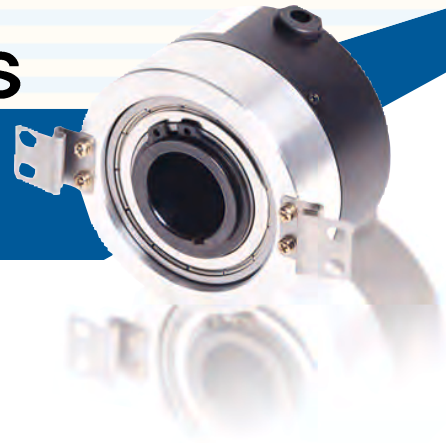
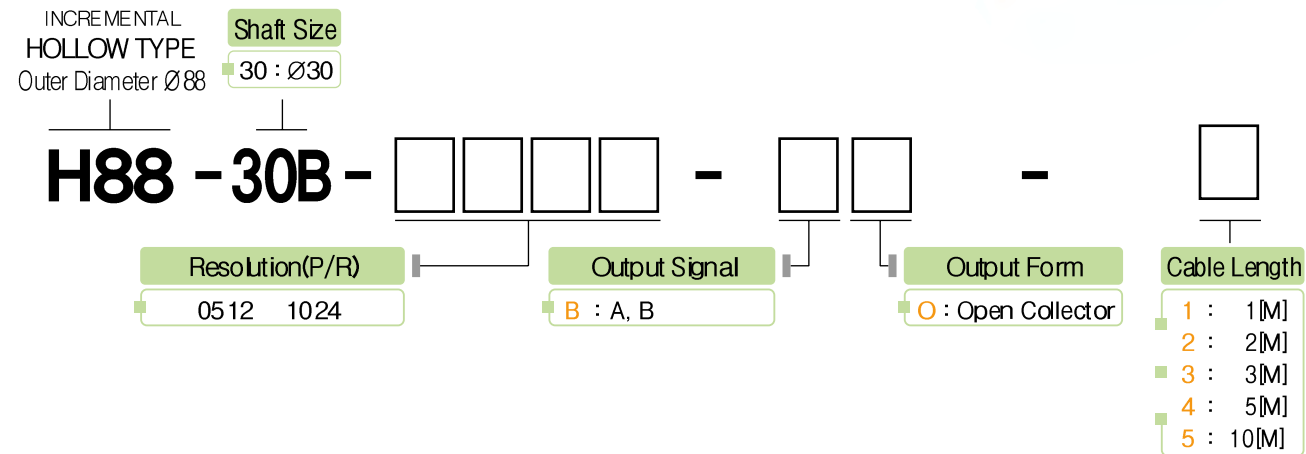


H88-30B Series

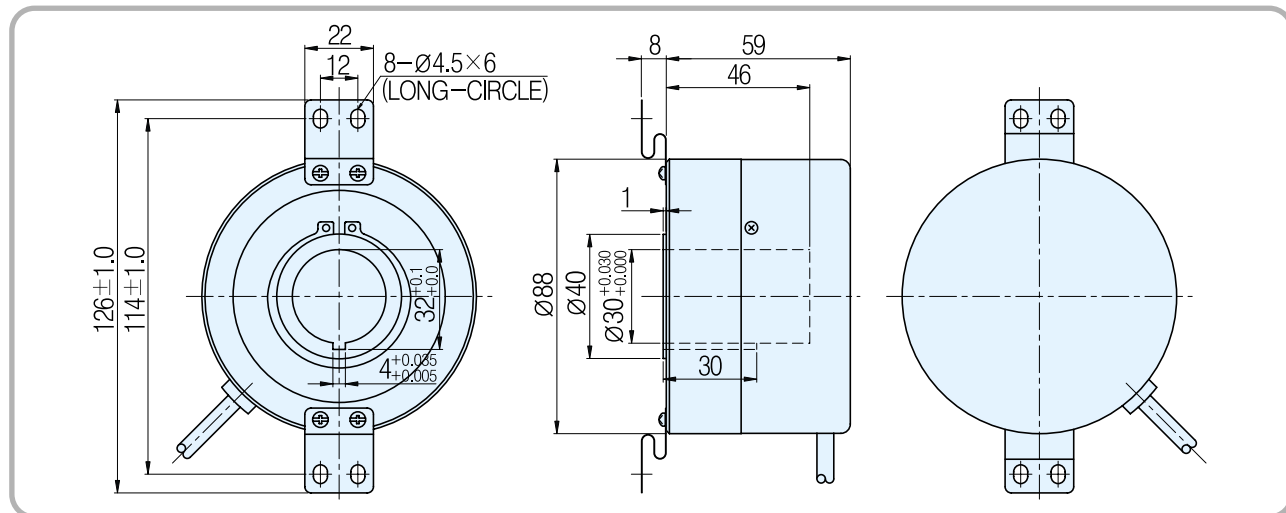
■Features : Elevator, Parking system, Industrial motor
Easy to be attached, Customized design,
Prompt delivery



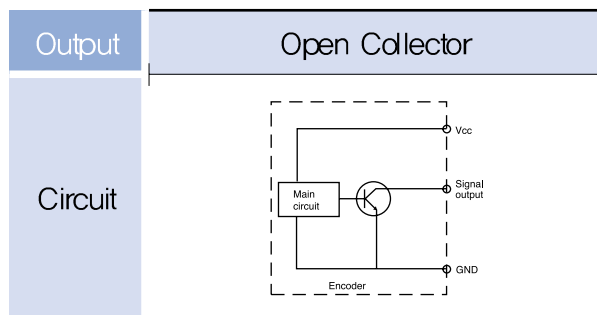
Model



External Dimension



Output Circuit



Electrical Spec.

Output type	Open Collector
Power Supply	DC +15[V] Ripple p-p : less than 5%
Consuming Current (In case of no load)	70mA Max
Maximum Response Frequency	100 KHz
Output voltage	Less than $V_s \cdot 0.5[V]$ / More than $V_s + 10[V]$
Output current	Less than 20mA
Rising, decline time	Less than 3 μ s
Common conditions	In case that the cable length of output side is 1[M] and load resistance is less than 1[k Ω]

Mechanical Spec.

Starting Torque	800g - cm Max
Maximum number of revolution	3000 rpm
Bearing lifetime	50,000[hr](In case of rotating by 3000rpm)
Allowable Shaft Load	Radial : 5.0kg Max Axial : 2.5kg Max
Position deflection of allowable shaft	Radial : Less than 0.05 mm Axial : Less than 0.2mm
Connection Table	3(AWG26) Shield CABLE
weight	900g

Rigid Spec.

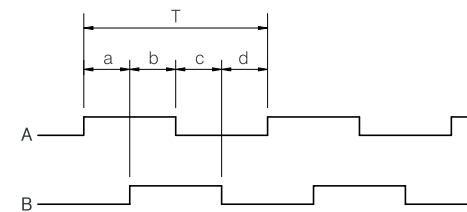
Operating Temp. Range	-10°C ~ +70°C (No freezing)
Preserving temp	-20°C ~ +85°C
Using humidity	35% ~ 80% RH
Preserving Humidity	35% ~ 85% RH
Internal Vibration	5G
Internal Shock	100G
Degree of Protection	IP 50

Output Phase Shift

CCW → Counterclockwise viewed from shaft end
 $a + b, c + d = T/2 \pm T/10$
 $a, b, c, d = T/4 \pm T/10$



Open Collector



Connection Table

Cable's Color	Connection Table
Output Form	Open Collector
Red	Vcc
Black	GND
Green	A Sig
Orange	A Sig GND
Brown	B Sig
White	B Sig GND
Shield	CASE Shield