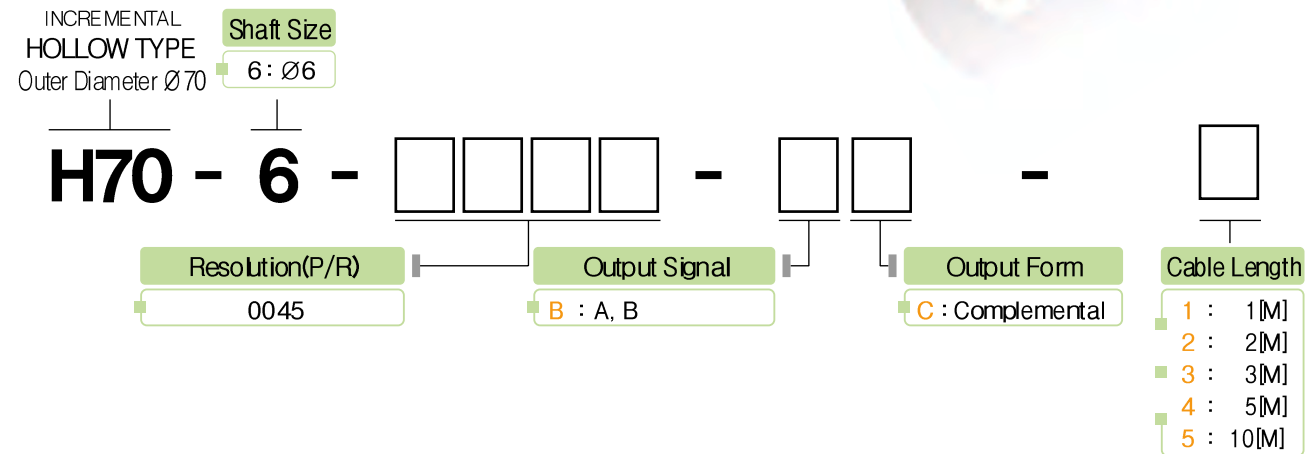


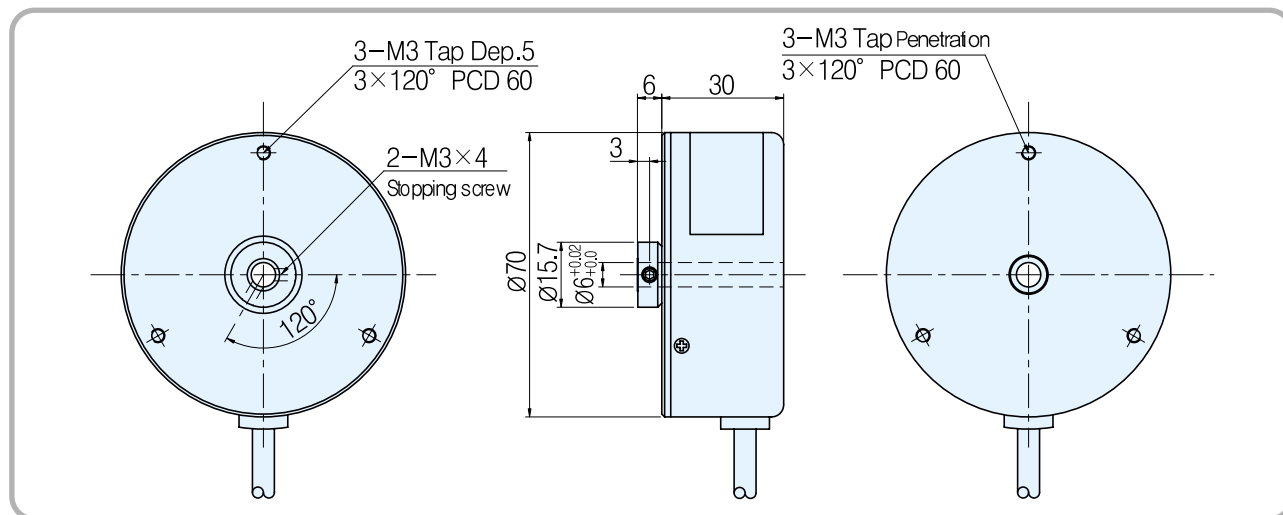
H70 Series

■Features : Textile machine, Industrial application
Rigid type, High reliability
Customized design, Prompt delivery

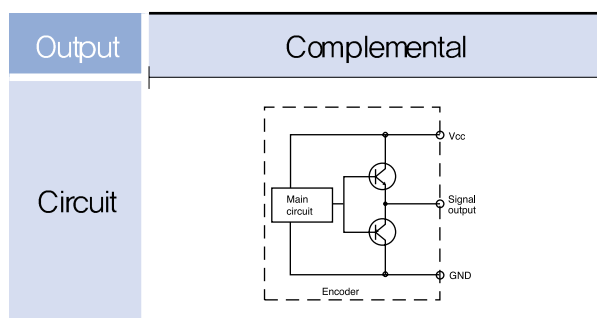
Model



External Dimension



Output Circuit



Electrical Spec.

Output type	Complemental
Power Supply	DC +15[V] Ripple p-p : less than 5%
Consuming Current (In case of no load)	150mA Max
Maximum Response Frequency	5 KHz
Output voltage	Less than V _L 0.5[V] / More than V _H 10[V]
Output current	Less than 10mA
Rising, decline time T _R / T _F	Less than 1μs <small>In case that the cable length of output side is 1[M] and load resistance is less than 1[kΩ]</small>

Mechanical Spec.

Starting Torque	80g - cm Max
Maximum number of revolution	6000 rpm
Bearing lifetime	27,000[hr](In case of rotating by 5000rpm)
Allowable Shaft Load	Radial : 2.2kg Max Axial : 1.1kg Max
Position deflection of allowable shaft	Radial : Less than 0.05 mm Axial : Less than 0.2mm
Connection Table	4(AWG26) Shield CABLE
weight	400g

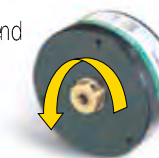
Rigid Spec.

Operating Temp. Range	-10°C ~ +70°C (No freezing)
Preserving temp	-20°C ~ +85°C
Using humidity	35% ~ 80% RH
Preserving Humidity	35% ~ 85% RH
Internal Vibration	5G
Internal Shock	50G
Degree of Protection	IP 50

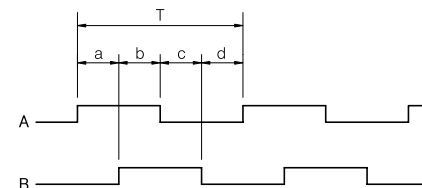
Output Phase Shift

CCW → Counterclockwise viewed from shaft end

$a + b, c + d = T/2 \pm T/10$
 $a, b, c, d = T/4 \pm T/10$



Complemental



Connection Table

Cable's Color	Connection Table
Output Form	Complemental
Red	Vcc
Black	GND
Green	A Sig
Blue	-
White	B Sig
Pink	-
Yellow	-
Orange	-
Shield	CASE Shield